



# 1<sup>ST</sup> THODDOO MASTERS TABLE TENNIS TOURNAMENT

19-25 AUGUST 2025

ENJOY YOUR FAVOURITE SPORT

*in your dream destination*

## THODDOO, MALDIVES

## Authority

The 1<sup>st</sup> Thoddoo Masters Table Tennis Tournament will be organized by Thoddoo Local Authority Company (TLAC) in association with Ihaa Table Tennis Academy of Maldives (ITTA), under the patronage of the Ministry of Sports, Fitness and Recreation.

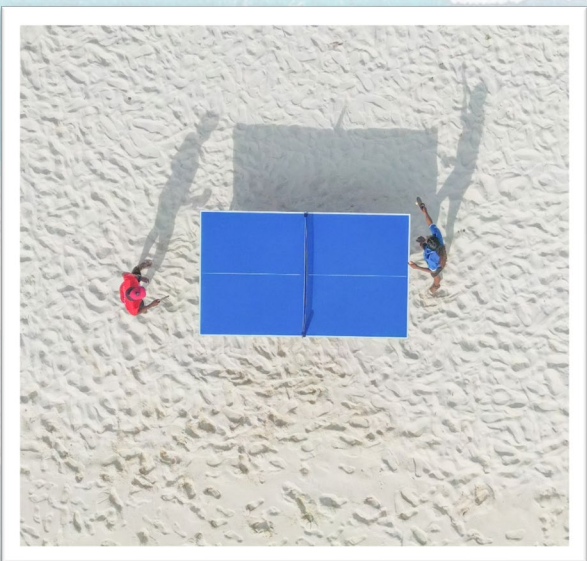
This elite and exclusive Tournament is the first in the series and is limited to the first 120 participants who register.

## Schedule

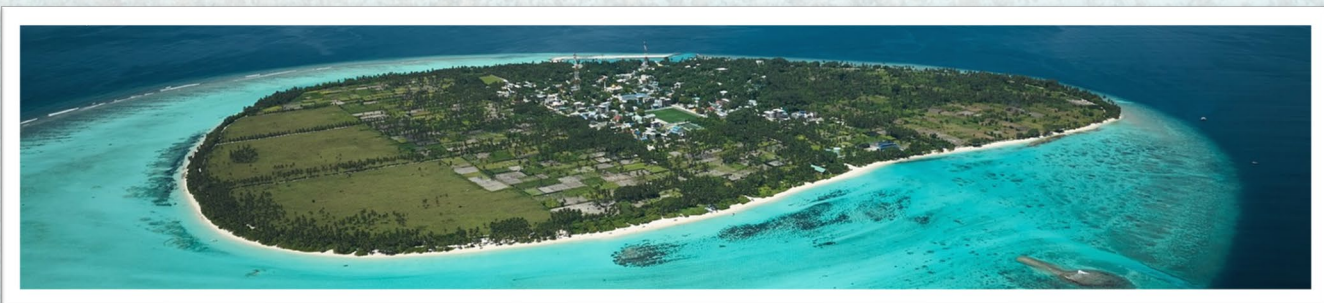
- |              |   |  |
|--------------|---|--|
| 19 Aug (Tue) | - | Arrival of Participants  |
| 20 Aug (Wed) | - | Accreditation and Practice (morning)<br>Opening Ceremony (afternoon)             |
| 21 Aug (Thu) | - | Singles group stage, (All Age Groups)  |
| 22 Aug (Fri) | - | Singles, Eliminations (All Age Groups)   |
| 23 Aug (Sat) | - | Doubles (All Age Groups)   |
| 24 Aug (Sun) | - | Mixed Doubles (All Age Groups) and<br>Finals<br>Award Ceremony<br>Excursion trip |
| 25 Aug (Mon) | - | Departure of Participants  |

**Changes may be made to the schedule depending on the daily match schedules.**

**Daily match schedules will be shared with players ahead.**



## Venue: AA Thoddoo Island, Maldives



The tournament will be hosted in the popular touristic island of Thoddoo in North Ari Atoll, Maldives; an inhabited island famous for its beautiful landscape, lush green vegetation, spectacular infinite beaches as well as luxury guest houses.

The tournament will be played in the multi-purpose hall at Thoddoo School designed for sports events and customized for the Table Tennis Tournament.

<https://www.facebook.com/ThoddooMastersTableTennisTournament/>

**For inquiries:** [tmitt@thoddoolac.com](mailto:tmitt@thoddoolac.com)



## Age Groups

35 - 39 years	-	born between 1990 and 1986
40 - 49 years	-	born between 1985 and 1976
50 - 59 years	-	born between 1975 and 1966
60 - 64 years	-	born between 1965 and 1961
65 - 69 years	-	born between 1960 and 1956
70 years and above	-	born in or before 1955

## Events

Men's Singles  
Women's Singles  
Men's Doubles  
Women's Doubles  
Mixed Doubles

Changes may be made to the above age groups depending on the number of entries in each age group.

## Registration

The total number of participants in the tournament will be capped at a **total of 120 players**, in view of space limitations at the venue. Therefore, players are advised to register early. They are required to scan the QR code and fill the registration form.

Registration Form can be downloaded from facebook page and emailed to [thoddoomasterstt@gmail.com](mailto:thoddoomasterstt@gmail.com)



## Registration Fee

Registration fee for the tournament is as follows:

- **US\$ 80** - For participants who book accommodation through TLAC before **31 March 2025**
- **US\$100** - for participants who book accommodation through TLAC after **1 April 2025**
- **US\$ 150** - for participants who book accommodation privately.

Registration Fee will need to be paid at the venue where participants will be required to physically register and obtain their tournament kit.

The Registration Fee will entitle players to play all the three categories - Singles, Doubles and Mixed Doubles.

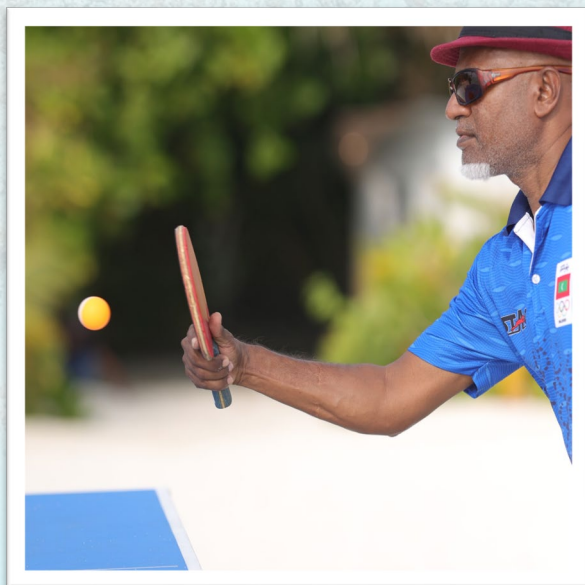
## Equipment

Table: DHS – Blue

Ball: DHS – 3 Star 40+ mm

## Dress Code

Players are required to wear the Tournament T-Shirt, (provided by the organizers) during the Opening Ceremony. However, they may wear any other T-shirts for matches, but no part of the playing uniform should be white.



<https://www.facebook.com/ThoddooMastersTableTennisTournament/>  
For inquiries: [tmmt@thoddoolac.com](mailto:tmmt@thoddoolac.com)





## System of Play

**Qualification Stage:** All players are required to play in the qualification stage, which will be in round robin groups.

**Single Elimination Stage:** Players will advance to the single elimination stage based on the order of finish in the qualification stage. The first two finishers in each group will advance to the Main Draw.

Players may only register in their assigned age category, which will be determined by year of birth.

**Men's and Women's Doubles:** Players may register in one doubles event and mixed doubles event only. However they are not required to enter in their age category. They may play in a different age group based on the age group of their partner, in which case, the age category will be determined based on the younger player in the pairing. If a player does not have a doubles partner, the organizers will assist in assigning a doubles partner in that age category prior to the event, if possible. There is no additional entry fee to participate in the doubles and mix doubles event. The same will apply for mixed doubles entry.

All matches will be played best-of-five games.

Matches will start at 0900 hrs. on all days of the event. Play will continue until all matches scheduled for the day are completed.



## Jury

A jury of 5 members shall be constituted to address any issues arising during the Tournament. A minimum of 3 members will need to be present to decide



<https://www.facebook.com/ThoddooMastersTableTennisTournament/>  
For inquiries: [tmmt@thoddoolac.com](mailto:tmmt@thoddoolac.com)



# Accommodation and Hospitality

Thoddoo offers a range of comfortable Guesthouses (small hotels) and showcases the traditional Maldivian hospitality at its best. The following hotels have been designated as tournament hotels, and they all offer the same special package for the participants in the tournament. Participants are required to indicate their preferred hotel, which will be arranged in order of request and availability.



## Amazing View Guest House

## Jeym Lodge

## Palm Garden Thoddoo Inn

## Lagoon Villa

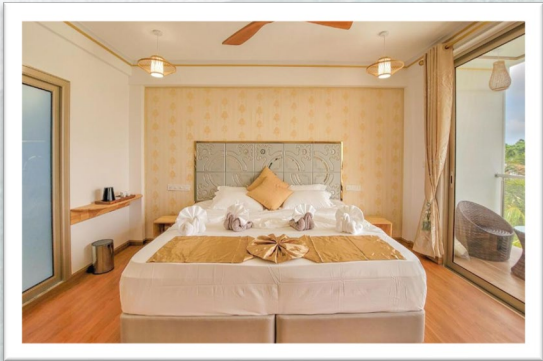
## Serene Sky Guest House

## Relax Lodge

Daily Hotel Rates				
	Before 31.3.25		After 1.4.25	
	B&B	HB	B&B	HB
Single	USD80	USD95	USD90	USD105
Double (per head)	USD60	USD75	USD70	USD85
Triple (per head)	USD60	USD75	USD70	USD85

Hotel rates include:

- a) inbound and outbound speedboat travel between Thoddoo and Airport worth USD70/- per head.
- b) 17% Tourism and General Services Tax (TGST) and 6% Green Tax, and
- c) complementary half-day excursion trip to a nearby island worth USD 50/- per head.



All hotels come with FREE amenities including, Wifi, Coffee/Tea, TV Services, Room Service, Room Safe, Air Conditioning, Mini Bar, Water Heater and Hair Dryer.

The hotels have beach access and is 10 minutes walking distance to the Tournament Hall.

Hotel payments will be collected in cash (US\$) at the venue at the accreditation.

## Option to extend the stay

Players who may wish to extend their stay either in Thoddoo or in a Tourist Resort of his/her choice, have this option open and the host will provide information and possible options upon request.

## Visa

Visitors to the Maldives are provided free Visa on arrival. They may be required to provide proof of accommodation and copy of return ticket at the Immigration counter upon arrival.



## Maldivian Cuisine

The food of Maldives is a fusion of its neighbouring South Asian countries for eg. Sri Lanka and India. Since Maldives is mostly sea, fish is the main staple food. Coconut is another major part of Maldivian food used in different forms like milk, oil or grated on top of dishes. Along with local fusions, Western dishes are served in Guest Houses, to cater to the international visitors from around the world.

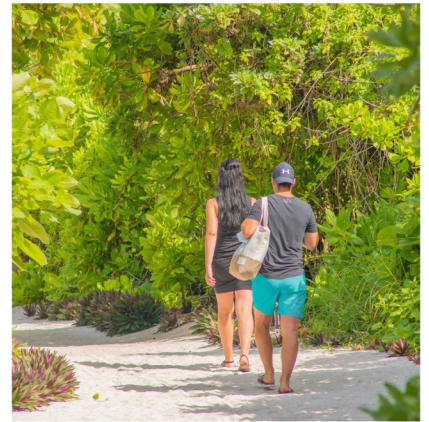
If any participant has a special dietary requirement, this is to be notified to the Organiser.



## Local Transport and getting Around

Thoddoo is 67 kilometers from Velana International Airport and Organizers will arrange speed boat ferry service from the International Airport to Thoddoo and back. It will take approximately 75 minutes by speed boat.

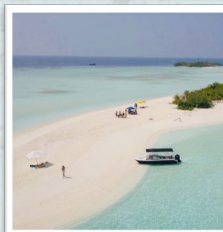
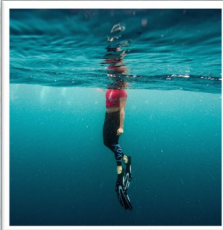
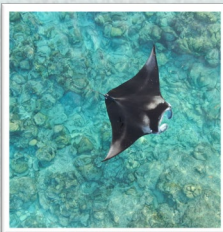
Getting around in Thoddoo is easily manageable by foot. However, for convenience bicycles and motorbikes are available for rental.



## Weather

The weather in Thoddoo, just as in the other islands of Maldives is hot and sunny year-round, with temperatures typically ranging from 28°C to 32°C.

Therefore, players are advised to bring appropriate and comfortable clothing. The Tournament venue and hotels will have air conditioning.



## Excursion and Other Activities

The island of Thoddoo is an inhabited island and therefore it is a great opportunity to enjoy the local experience of Maldives.

The organisers will arrange a complimentary excursion for those who book accommodation through TLAC, on the final day of the tournament and details will be provided at the time of Registration. Additional tailor-made activities can also be arranged to cater to different needs and to make your visit a memorable experience. Details will be made available at the accommodation venues.

Popular Excursions include Diving, Snorkelling, Fishing, Island Hopping and Sandbank Picnics.